



Frequently Asked Questions – Family Camp

Thank you for your interest in **Camp Victory for Families!** We created this document to answer the most common questions about camp. If you have any additional questions, please contact our Camp Director, Andrea Friedman, MSW at afriedman@marfan.org.

Q: Where will Camp Victory for Families be held in 2024?

A: This year, we are holding family camps in two locations:

- Camp Twin Lakes in Winder, Georgia (an hour from Atlanta), September 20-22
- Pali Retreat in Running Springs, California (an hour and a half from Los Angeles), November 8-10

Q: What time does Camp Victory start and end?

A: Check-in for families at both camps is 4:00 pm on Friday. Check-out for our Georgia camp is 1:00 pm on Sunday, September 22 and check-out for our California camp is 10:00 am on Sunday, November 10. You are still able to attend if you need to arrive later or leave earlier.

Q: What are the age requirements for Camp Victory?

A: Camp Victory for Families is designed for children ages five and older and adults, with and without a connective tissue condition. Children under the age of five are welcome to join their family, however, activities are not geared towards the younger age group. All members of the family ages five and older are considered campers and will enjoy traditional camp activities together throughout the weekend.

Q: How much does it cost to attend Camp Victory?

A: The Foundation greatly subsidizes our camps thanks to the generous support of our donors. The registration fee is the same for campers of all ages. The fee is \$125 per person, which includes meals, lodging, and all activities throughout the weekend. A limited number of scholarships are also available – please see the scholarship application on the Camp Victory website

Q: Who are the Camp Victory staff?

A: The Marfan Foundation has a Camp Director, dedicated medical professional and other staff/volunteers on-site during camp. Our partner camp staff runs the activities, meals, and daily operations. Family camps do not have traditional counselors, as families stay together in the cabins, and parents/guardians are responsible for their children. All Camp Victory and partner camp staff and volunteers go through a background check, including checks on the National Sex Offender Registry.

Q: If someone in my family uses a wheelchair or mobility device, are they able to participate in all activities?

A: Both of our partner camps are accessible for all campers, including wheelchair users and individuals with other mobility needs and physical challenges. A range of activities are available with adaptive tools to accommodate many different abilities. Cabins are wheelchair accessible, with accessible bathrooms inside.

Q: What are the activities for families?

A: Campers participate in a variety of traditional camp activities, both indoors and outdoors; all are adapted to be safe for individuals with genetic aortic and vascular conditions. Depending on the camp location and weather, activities may include archery, nature walks, arts & crafts, fishing, rock climbing wall, zipline, boating, horseback riding, cooking, candle making, woodworking and more. There are no contact sports during camp and no activities requiring heavy lifting or significant exertion. Families have the opportunity to choose activities they are most interested in. A fun group activity is held each evening, including, of course, s'mores by the campfire! The daily camp schedule is from approximately 8:00 am to 9:30 pm.

Sample of Camp Twin Lakes (GA) Activities



Pali Retreat (CA) Activities



Q: Is there any educational programming?

A: The weekend at camp is more about having fun, bonding with your family, and getting to know others with whom you can relate. However, we'll be holding an "Ask the Doctor" session for parents and guardians, while at the same time, holding a special activity for the children.

Q: How do you ensure everyone's safety at camp?

A: Campers come first and everything we do is focused on you and your family members having a positive experience in a safe and secure environment. Our partner camps support the high standards established by the American Camp Association. From our partner camps' emergency management plans to our gathering detailed information from all participants about allergies, diet, restrictions, and emergency contacts, through our secure CampDoc system, we do our best to address the safety of everyone at camp.

Q: How will my children get their medication?

A: Parents/guardians are responsible for administering medications for their children. There is a doctor or nurse on-site during camp to provide any necessary assistance.

Q: What happens if a camper has a medical emergency?

A: Camp Victory and our partner camps have dedicated medical staff. In case of an emergency, our on-site doctor or nurse is contacted, along with our Camp Director. Should EMS need to be called, the camps are located within 7-14 minutes of the closest hospital. Most camp staff are certified in CPR and First Aid.

Q: What is Camp Victory doing to protect campers from COVID-19?

A: Camp Victory and our partner camps follow guidelines established by the CDC and local, state, and federal authorities. While not required for all campers, we recommend campers take a rapid antigen test prior to arriving at camp if they have any COVID-19 symptoms since they will be living in close quarters with others, and some may be more vulnerable if they get infected. A basic health screening form will be completed for each camper upon arrival, with ongoing monitoring for symptoms throughout camp. Anyone exhibiting COVID-19 symptoms will be given a rapid antigen test, and if the results are positive, will be immediately quarantined and required to leave. Participants who have been exposed to someone with a positive COVID-19 result will be monitored and a decision made based on CDC recommendations. Currently, there is no COVID-19 vaccination requirement. For more details, please refer to our COVID-19 Policy.

Q: How does camp address bullying?

A: Camp Victory and our partner camps have a "zero tolerance for bullying" policy. Any incidence of bullying is addressed immediately. Camp Victory, together with our partner camps, reserves the right to remove campers who are bullying others and exhibiting behaviors not fitting for the camp environment.

Q: Can my family be placed with another family we know?

A: Every effort is made to accommodate specific cabin requests. If not possible, please keep in mind that you will still be able to participate in activities and meals together throughout the day.

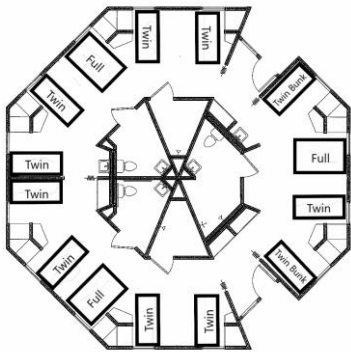
Q: What do I need to pack?

A: We will send a suggested packing list prior to the start of camp. Campers must bring their own bedding (twin size), pillow, and towels. There are no laundry services available except for emergencies. Both camps do not allow campers to bring alcoholic beverages; knives, fireworks, firearms, or other weapons; drugs (except prescription or other legal drugs); forms of smoking (including tobacco, e-cigarettes and vapes); pets or animals (except for service animals).

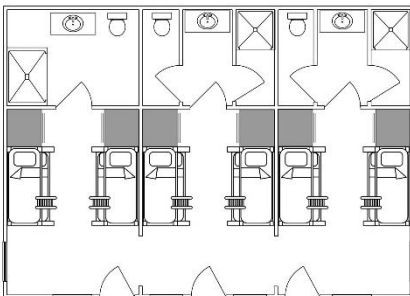
Q: What are the cabins like?

A: Cabins at both Camp Victory locations are wheelchair accessible, with restrooms and showers inside. Campers sleep on twin-size beds, most of which are bunk beds, with some stand-alone. All campers must bring their own sheets, blankets, pillows, and towels. Cabins are assigned by family, with each family staying in their own section.

Camp Twin Lakes (GA) Cabins



Pali Retreat (CA) Cabins



Q: Can special dietary needs be accommodated?

A: Our partner camps offer a variety of healthy foods and beverages at every meal, and healthy snacks. Most special dietary needs can be accommodated with advance notice. Please indicate any special dietary needs in CampDoc. All meals are freshly made with family-style service. There is always a salad bar option with protein and a pantry for additional options.

Camp Twin Lakes Dining Hall



Pali Retreat Dining Hall



Q: How can I find out more about the partner camps?

A: We encourage you to visit the websites of our partner camps to learn more about them:

- Camp Twin Lakes (Georgia) - <https://www.camptwinlakes.org/>
- Pali Retreat (California) - <https://www.paliretreat.com/>

Q: How do I register for Camp Victory?

A: Registration for Camp Victory for Families is available through:

- The Marfan Foundation website: <https://marfan.org/get-involved/community/marfan-camps/>,
- The VEDS Movement website: <https://thevedsmovement.org/events/camps-for-kids-and-families/>
- The Loeys-Dietz Foundation website: <https://www.loeysdietz.org/get-involved>



Camp Twin Lakes
Winder, GA
September 20-22, 2024

Pali Retreat
Running Springs, CA
November 8-10, 2024

